



On behalf of everyone at Ivanhoe Mines, we salute our front-line medical professionals who are working hard to keep us safe during the COVID-19 global pandemic. Pictured above are members of Kamoakakula's team of doctors, nurses and paramedics (names on page 4).

Building what will be **3 of the world's best mines** and exploring for the **next copper giant** in Southern Africa's legendary mineral fields

**WESTERN FORELAND**

Copper exploration

Democratic Republic of Congo's Central African Copperbelt

**KAMOA-KAKULA**

Copper mine development and exploration

Democratic Republic of Congo's Central African Copperbelt

**PLATREEF**

Mine development at platinum-group elements, gold, nickel and copper discovery

South Africa's Bushveld Complex

**KIPUSHI**

Zinc, copper, silver and germanium at historic, high-grade mine

Democratic Republic of Congo's Central African Copperbelt



In early March, Ivanhoe appointed a task team from senior management with overall responsibility for COVID-19 response planning.

The team is led by Dr. Nicolette Du Plessis, a specialist in Paediatric Infectious Diseases and a Professor at the University of Pretoria in South Africa, and includes specialist doctors, paramedics, nurses, as well as counsel from several external, world-leading epidemiologists.





Members of Kamoa-Kakula's on-site medical team in place to quickly identify and treat any potential COVID-19 cases and prevent the spread to other personnel.

Front row, L-R: Salva Mujinga Tshimanga (nurse); Augustin Kabedi Mujinga (nurse); Papy Wedialumbele Lumasa (nurse); Asmara Ally (ALS paramedic); Dr. De Delvareine Kabwayi Buyamba (medical doctor).

Second row, L-R: Tresor Kasongo Dibwe (nurse); Paulin Mwanza Umbanga (nurse); Greg Hillen (ALS paramedic); Timothee Bwana Ngoie (nurse); Christian Masengo Ngoy (nurse); Adellard Muyambo Kazenga (nurse); Prince Hlongwane (ALS paramedic); Dr. Patrick Kasongo Ngoyi (health manager); and Alain Sambwe Masengo (nurse).



Dr. Delvareine Kabwayi Buyamba (Medical Doctor), Papy Wedialumbele Lumasa (Paramedic), and Dr. Patrick Kasongo Ngoyi (Manager, Occupational Health) (left to right) practice medical response procedures at the Kakula hospital.





Underground development at the Kakula Copper Mine continues to advance at a rapid pace. Approximately 12 kilometres of underground development now is complete, which is roughly 3.4 kilometres ahead of plan. In March, the mining team set another new monthly development record of more than 1,350 metres – more than 330 metres ahead of plan for the month.





In early March, a delegation of senior members from the DRC government, together with members of Kamoia-Kakula's technical team, saw first hand the excellent underground development progress at the Kakula Mine.

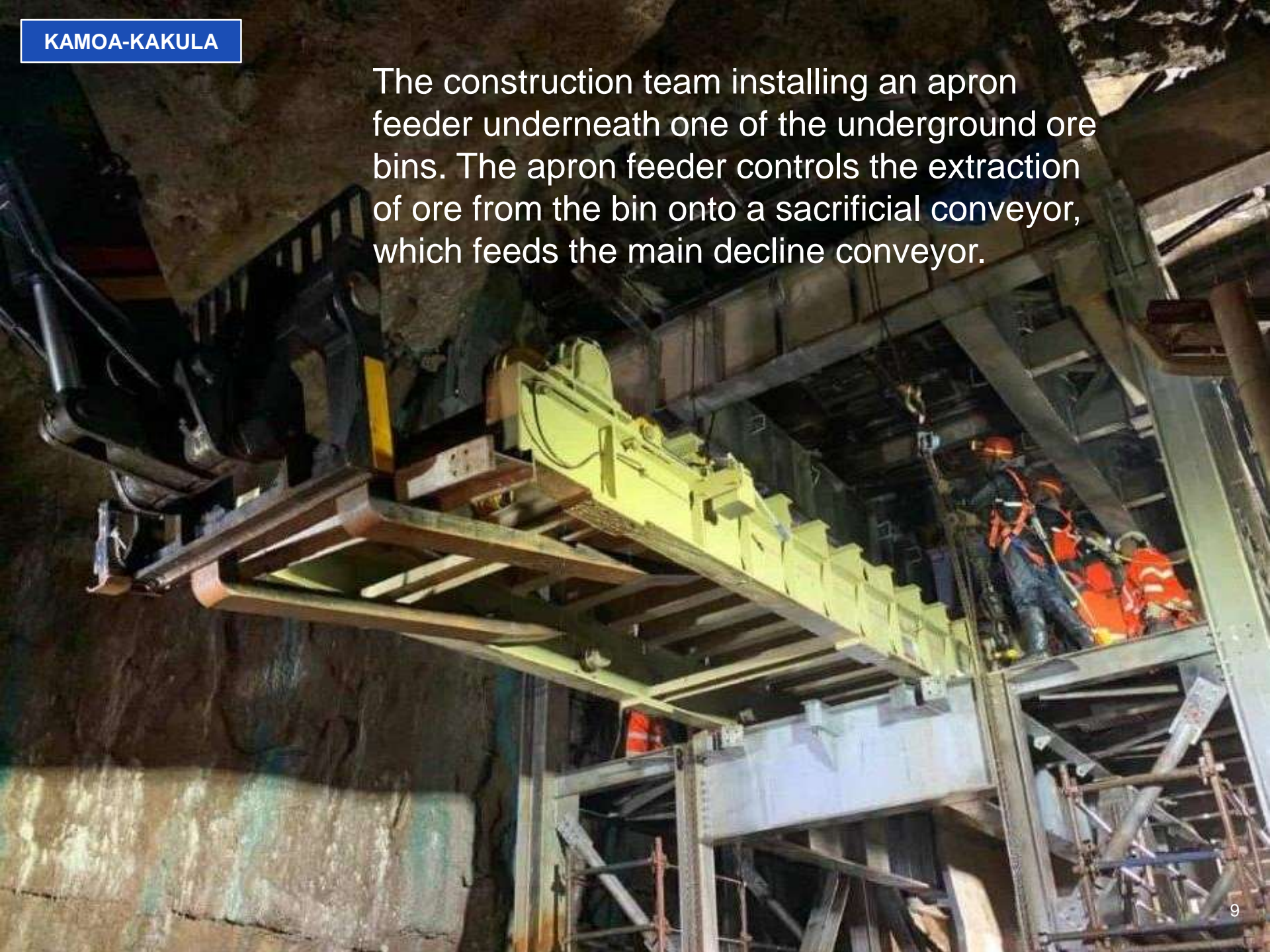




A sample of Kakula's chalcocite-rich development ore grading **62.9% copper**.



The construction team installing an apron feeder underneath one of the underground ore bins. The apron feeder controls the extraction of ore from the bin onto a sacrificial conveyor, which feeds the main decline conveyor.








View looking down the east ore bin, one of two 5000-tonne underground ore bins currently being constructed at Kakula.



A photograph showing three workers in orange and black safety gear and red hard hats working on a large industrial conveyor system. They are positioned on a platform, working on a horizontal section of the conveyor. The structure is made of heavy steel beams and supports. In the background, there are more levels of the structure and some scaffolding. The lighting is bright, highlighting the metallic surfaces.

Workers preparing the conveyor system for the installation of the tail pulley.





Construction crew members extending the wall at Kakula's main underground water storage dam.





Belt installation is underway on the high-volume conveyor system at the Kakula Mine that will transport broken ore from underground to the surface processing plant. Commissioning of the belt is expected to start in April 2020.





Completion of reaming of Kakula's Ventilation Shaft 2 earlier this month. The 5.5-metre diameter shaft is the third of five ventilation shafts to be raise bored in Kakula's first phase of development.



Newly completed housing units at Kakula Village.





Construction of the concrete foundations for the ball mills is advancing rapidly for the 3.8 million-tonne-per annum copper processing plant at the Kakula Mine. Watch a time-lapse video of the progress here: <https://vimeo.com/400919101>





Pouring the concrete foundations for the processing plant's concentrate thickener.



Offloading oversized equipment for Kakula's processing plant.





The new, eight-kilometre, by-pass road on the Kamoa-Kakula mining licence, officially opened on March 27th. The private road allows all traffic to and from the mine to safely by-pass the small villages of Israel and Kaponda.





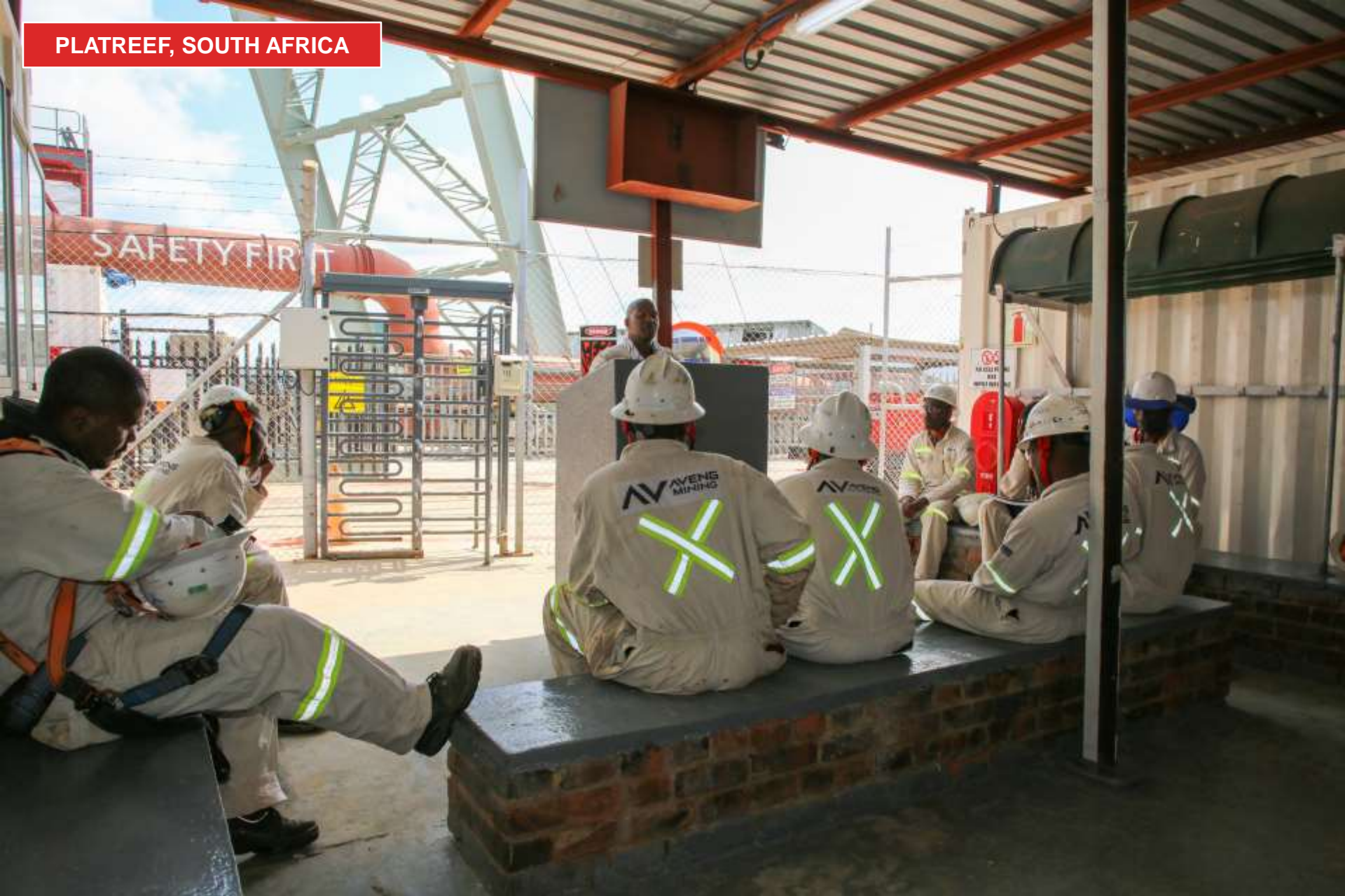
The Kamoa-Kakula Sustainable Livelihoods Program is creating a local supply chain by selling produce from its community-run gardens to the Kamoa-Kakula mine, supporting economic diversification in surrounding communities and improving living standards for local farmers.



The Mumba community-run garden and fish farms, another Kamoa-Kakula Sustainable Livelihoods initiative that is providing quality, local produce for citizens living near the project.







Mid-shift safety meeting for the shaft-sinking team.





Ayakha Mbongonya, Justin Taylor and Johannes Nkhoma (Geotechnical Engineering Department) before going underground for resin bolt pull tests.





Johannes Nkweng (Driver); Gilbert Sampa (Engineer) and Phago Daniel (Driver) coming back to surface from underground.





Drilling rig at the Platreef's 950-metre-level. Platreef's Shaft 1 is now at a depth of 975.3 metres below surface. The shaft will be sunk to a final depth of approximately 1,000 metres.





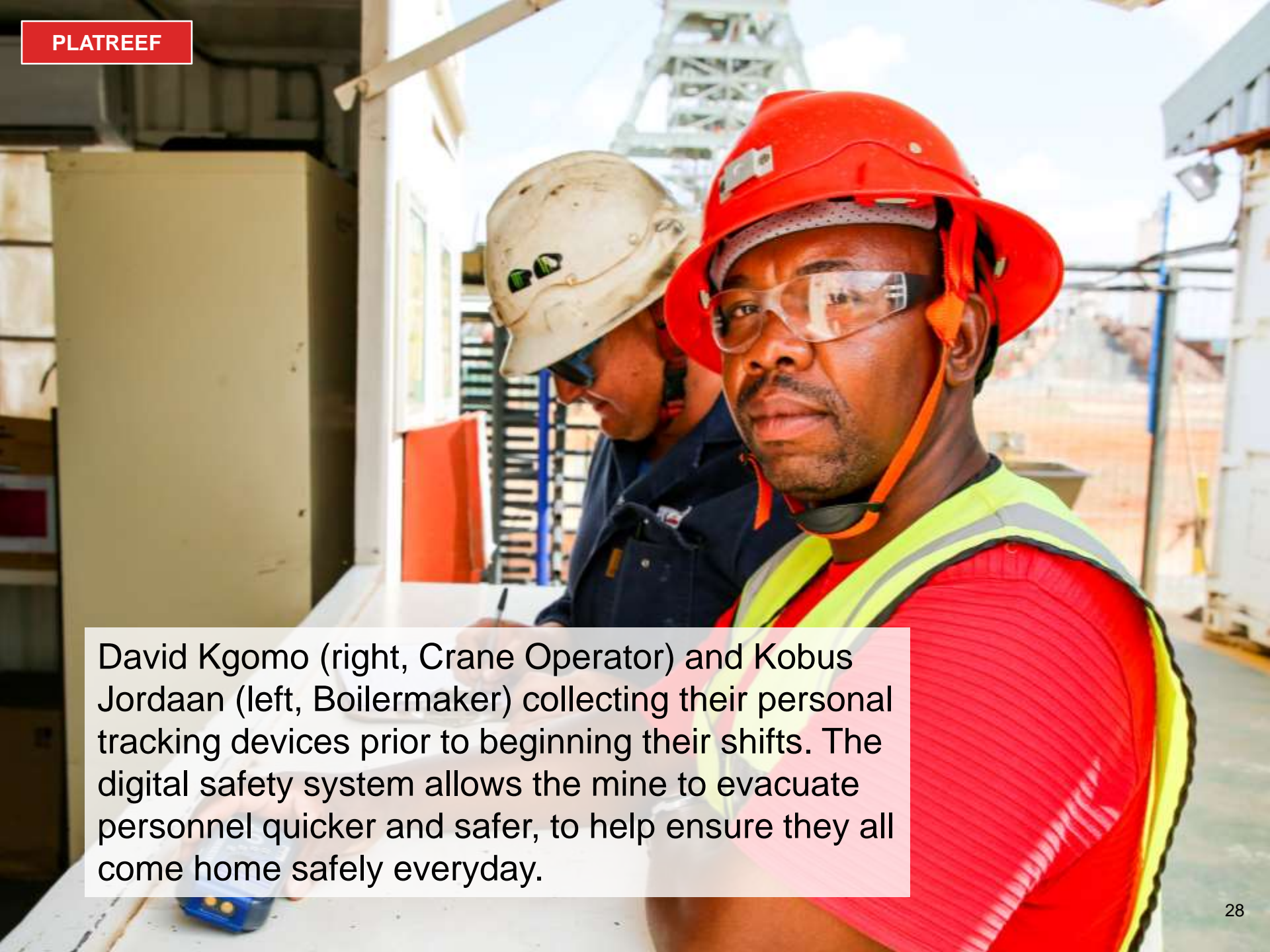
Frans Serite (Stage Team Leader) paints the sidewall of the 950-metre-level station with whitewash, after the installation of permanent wall support.





Raisibe Ntini (Geology Intern) identifies samples of development rock to be used in backfill testwork. Approximately six tonnes of rock will be tested to determine the percentage of the mine's tailings that will be sent back underground as pasted backfill.



A photograph of two miners in a control room. In the foreground, a Black man (David Kgomo) wearing a red hard hat, safety glasses, and a high-visibility yellow vest over a red shirt looks towards the camera. Behind him, a white man (Kobus Jordaan) wearing a white hard hat and safety glasses is looking down at a device. They are both holding small blue electronic devices. The background shows an industrial setting with a large metal structure, possibly a crane or part of a mine shaft, under a clear sky.

David Kgomo (right, Crane Operator) and Kobus Jordaan (left, Boilermaker) collecting their personal tracking devices prior to beginning their shifts. The digital safety system allows the mine to evacuate personnel quicker and safer, to help ensure they all come home safely everyday.





Spraying disinfectant as part of Platreef's COVID-19 mitigation measures.



Gilbert Sampa (Mine Engineer)  
after conducting an  
underground safety inspection.



Precious Madiba (HR Assistant) monitoring noise levels outside the perimeter of the Platreef Project to ensure the project remains compliant with all regulations.







Mulamba Belangana (Boilermaker), smoothing an underground handrail at Kipushi.





Mechanics Kisenga kayumba (left) and Tshibangu Kamwanga (right) at Kipushi's 850-metre-level pumping station.





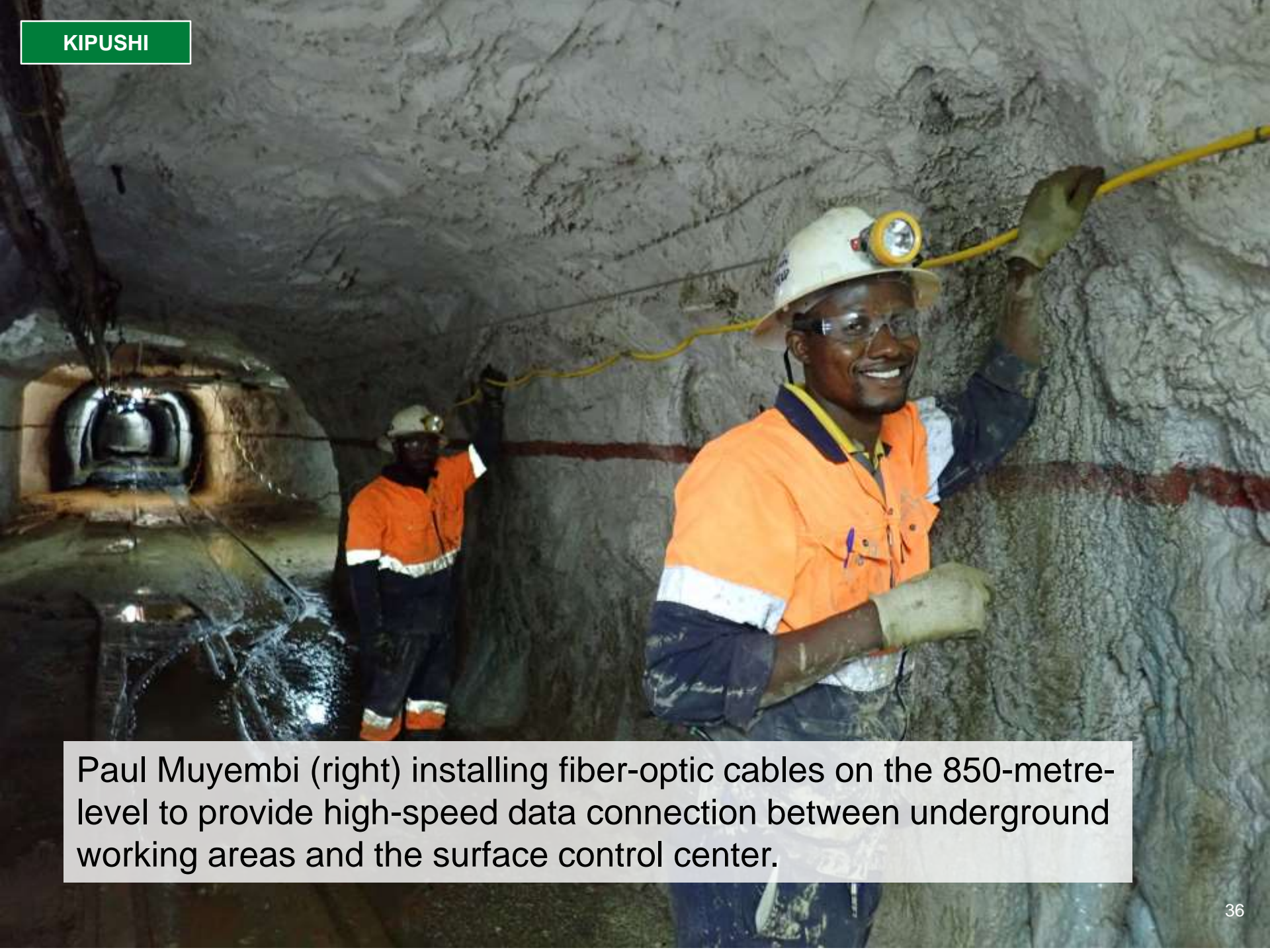
Mechanics perform routine maintenance on an underground transport vehicle at Kipushi's 1150-metre-level workshop.





Miners Mpoyo Lenge (left) and Katende Muya (right) supporting shaft sidewalls with welded mesh and rock bolts in Shaft 5 at the 850-metre-level station.





Paul Muyembi (right) installing fiber-optic cables on the 850-metre-level to provide high-speed data connection between underground working areas and the surface control center.





Mukendi Kabongo (Mine Superintendant) one of Kipushi's new generation of bright, young Congolese employees who we expect to lead the launching of a new era of commercial production at the ultra-high-grade mine.