

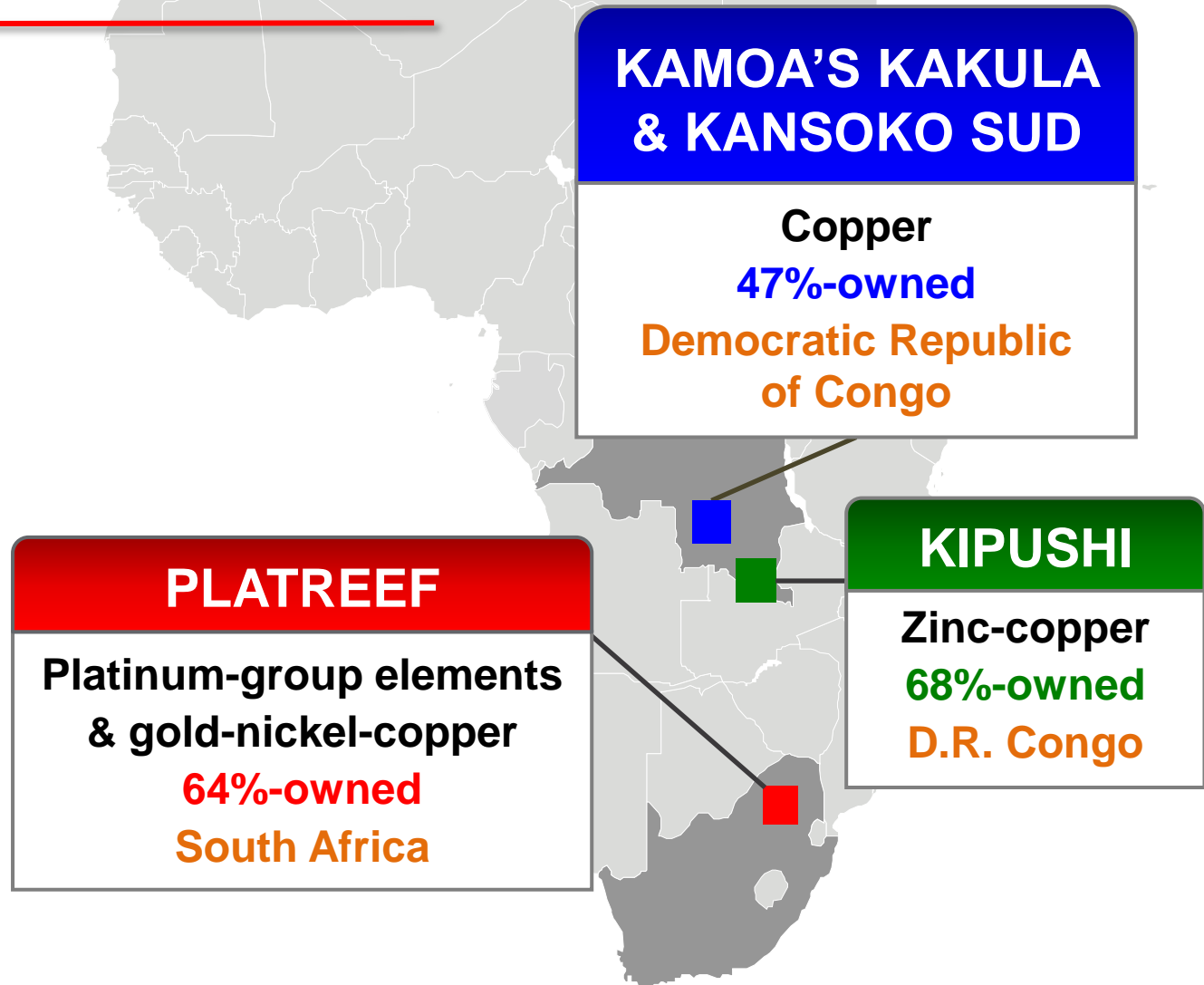
Celebrating renewed life and energy



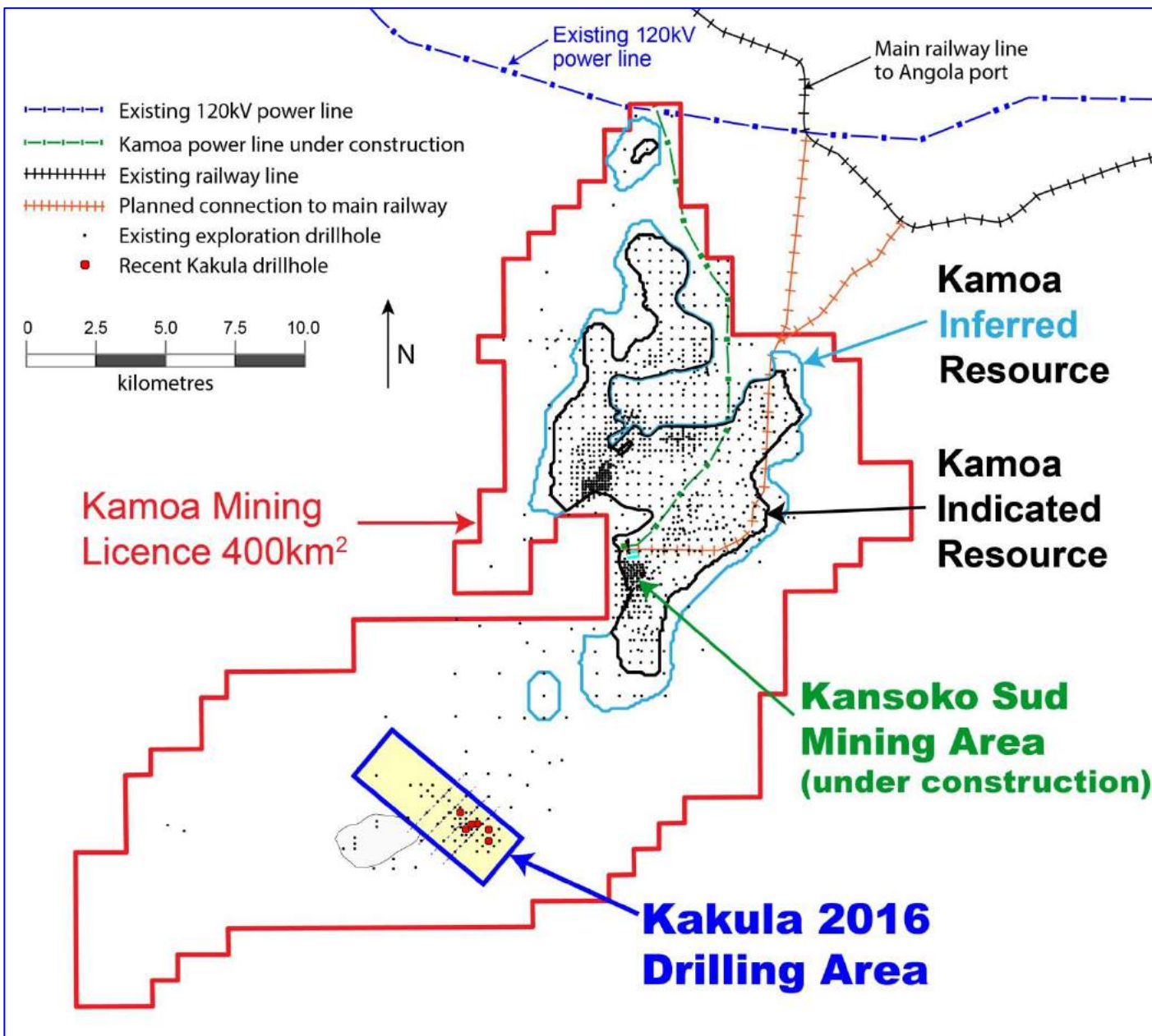
Following an initial upgrading step backed by Ivanhoe and Zijin, the Mwadingusha hydropower generating plant is feeding additional electricity to the DRC national grid, which in turn will supply power for the Kamoa and Kakula mine developments.

(See Kamoa section, starting page 3.)

Building our future, *today*, in Sub-Saharan Africa



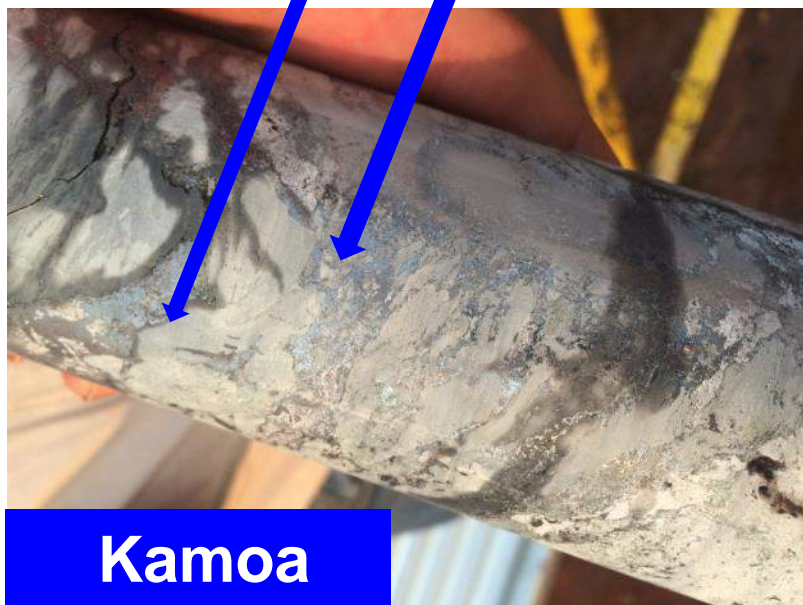
On September 22, Ivanhoe Mines and Zijin Mining announced more high-grade copper results from ongoing drilling at the Kakula Discovery on the Kamoa Copper Project. Kakula's chalcocite-rich corridor further expanded to at least 3.5 kilometres in length.



+12% copper in hole DD1041

Massive chalcocite

**Disseminated
massive chalcocite
(approx. 80%
copper by weight).**



Kamoa



Core from Kakula drill hole DD1016 showing high-grade chalcocite mineralization (chalcocite is approx. 80% copper by weight). DD1016 intersected 8.75 metres (true width) of 9.84% copper at a 3.0% copper cut-off, beginning at a downhole depth of 362.0 metres; 9.27 metres (true width) of 9.11% copper at a 2.5% copper cut-off; 10.22 metres (true width) of 8.49% copper at a 2.0% copper cut-off; and 18.78 metres (true width) of 5.32% copper at a 1.0% copper cut-off.



Core from Kakula drill hole DD1026 showing high-grade chalcocite mineralization. DD1026 intersected 14.66 metres (true width) of 7.66% copper at a 3.0% copper cut-off, beginning at a downhole depth of 333.8 metres; 15.48 metres (true width) of 7.39% copper at a 2.5% copper cut-off; 16.97 metres (true width) of 6.94% copper at a 2.0% copper cut-off; and 18.57 metres (true width) of 6.49% copper at a 1.0% copper cut-off.



Kamoa

Senior management from Ivanhoe Mines and Zijin Mining pointing to a potential box-cut location at the Kakula Discovery. The Kamoa Project is a joint venture between Ivanhoe and Zijin.



Kamoa

Ceremonial ribbon is cut by Jean-Claude Kazembe Musonda, Governor of the Democratic Republic of Congo's Haut-Katanga Province, marking the resumption of production by the first of six generating units to be upgraded at the 86-year-old Mwadingusha hydropower plant on the Lufira River. Ongoing work financed by Ivanhoe and Zijin has begun supplying an initial 11 megawatts of power to the national grid and will progressively upgrade three hydropower plants. (More details in Ivanhoe's Sept. 13 news release).



Kamoa

Mwadingusha's newly recommissioned power-generating turbine No. 1.



Kamoa

Reconditioned crane and new alternator at the Mwadingusha hydropower plant.



Kamoa

Jumbo drill completing holes for another blast in the ongoing excavation of the declines for the Kansoko Sud mine.



Kamoia

Cover drilling to test water and ground conditions at one of the two declines at Kansoko Sud.

Kamoa

One of the seven drills in operation at the Kakula Discovery, approximately 10 kilometres southwest of the Kamoa Project's Kansoko Sud box cut.



Kamoa

Geotechnical study is underway for the planned new road to Kolwezi.





Kamoa

Construction of the road to the Kakula Discovery area.



Kamoia

Ivanhoe-sponsored construction of a secondary school in the local Kaponda community.



Platreef

View of Shaft 1 head gear.



Platreef

Service pipes being prepared for installation at Shaft 1.



Platreef

A “cactus grab” mucking crane that is used to grab and lift broken rock from the bottom of Shaft 1 during sinking operations.



Platreef

Broken rock and excess water are lifted to surface from the bottom of Shaft 1 during shaft-sinking operations.



Meeting with mineworkers to emphasize safety procedures.
The Platreef Project reached a total of **31,568 hours**
worked without a lost-time injury by the end of August 2016.



Kipushi

Shaft P15 gate maintenance at the 925-metre level.



Kipushi

Welding pipe connections for a Sulzer pump at the 1,200-metre-level pumping station.



Kipushi

Maintenance of the new Grifo pump at the 1,200-metre-level pumping station.



Kipushi

Routine removal of muck at 1,200-metre level.



Kipushi

Roadway paving at the entrance to the Kipushi Mine.